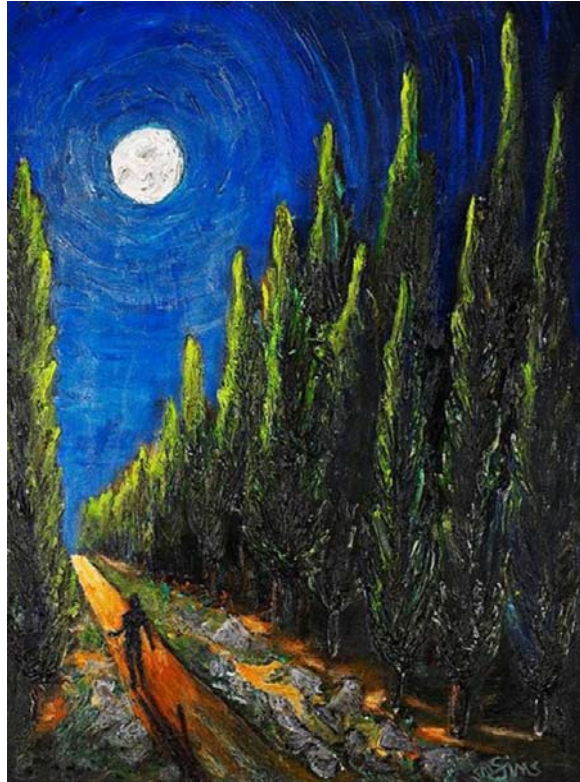


Adult Education

Winter/Spring 2009



The Journey

When Abram was ninety-nine years old, the LORD appeared to Abram and said to him, "I am God Almighty, walk before me, and be blameless. And I will make my covenant between me and you, and will make you exceedingly numerous."

– Genesis 17:1-2

The Journey

As we walk the journey of life, we venture from dark valleys of grief and pain to mountain tops of joy and celebration. In recent months, we have watched our world struggle through those human valleys – economic woes, environmental crisis, violent rampages and wars. As people of faith, however, we understand these events in a different light. We trust that the God of Abram also walks behind us, faithful in covenant love for us. We see that God shapes the possible out of our impossible – abundance from barrenness, hope from despair, peace from conflict, new life from death.

As we journey into a new year, our adult education offerings will reflect not only the time in which we live, but also the God who calls us to experience our world through the lens of faith. We hope that you will explore these options as you seek to deepen your relationship to God, others, and all of creation.

Questions? Contact Lisa Schubert
(lschubert@northchurchindy.com or 924-2612).

Sunday Morning Education Opportunities –

9:45 a.m.

***Studies:** We hope you will explore different options that meet your passions and interests. The following classes engage with Biblical topics; the intersection of popular culture and faith; mission and social justice; and deepening our relationship with God and one another.*

Amazing Grace (Conference Room): This ongoing class reads a variety of books as a lens through which to ask and discuss our deep questions about faith, spirituality, life experience, and service in the world as people of God. This class is a starting point for people who struggle with traditional historic views of theology, the Bible, and church history, and who want to deepen their spiritual journeys into a more mature understanding. Beginning Jan. 11, we will continue to read *Whirlwinds and Small Voices* by Amy McConkey Robbins. Amy will be facilitating most of the discussions. Even though this book has a very specific subtitle—“Sustaining Commitment to Work with Special-Needs Children,” Parker Palmer says of the book: “. . . they write from a place of such deep candor, faith, and hope that their words will speak to people in every walk.” Please plan to join us for this discussion, which will continue through Feb. 1. Books are available in the West entry reception desk or in class. Doris Jane Conway (409-6460 or djconway4013@comcast.net) and others facilitate the sessions.

Contemporary Biblical Forum (Room 009 – west side of Game Room): We provide a forum for Bible scholars and academics in Bible, theology, and church history to share with those interested in the academic study of the Bible, theology, and history, both ancient and modern. This class is intergenerational, diverse, and inclusive of NUMC members and non-members. All people and ideas are welcome. Grab your coffee cup and bagel and come on down! Contact Austin Ritterspach (924-4661 or aritterspach@aol.com).

NEW! Faith and Finance Classes: Starting Jan. 11, we will offer a short-term series of classes on topics such as “rightsizing” your budget

to fit your income; better understanding credit cards and credit scores; innovative ideas for teaching and practicing generosity as a family; retirement planning; and understanding Medicare. These classes will run parallel to the sermon series, *Biblical Wisdom for Challenging Economic Times*, where we'll learn more about finding financial peace in the midst of our economy. Watch for specific dates and times for each class.

New Corinthians (Parlor): This class devotes itself to understanding the intersection of faith and culture. Topics vary weekly and cover subjects from popular culture in literature (books, magazines, news stories), media (films, television, videos), and music. Contact Doshia Stewart (328-1302 or doshia.stewart@comcast.net) or Toby and Marie Powell (543-9728 or tobmarpowell@yahoo.com).

Power and Light (Room 205): This class is a welcoming, diverse group of individuals united in fellowship, social service, and personal support in the mutual pursuit of spiritual growth. The new year will begin by continuing the conversation on service and tutoring with IPS #43. Contact Kathy Beck (251-9143 or beck305@hotmail.com).

Sojourners (Room 005): Founded in 1991, this intergenerational class selects some Bible studies and some topical studies. Members also serve and socialize together. The class offers coffee, tea, and fellowship along with the study. Visitors and newcomers always are welcome. Contact Eric Galloway (843-9263 or egalloway@signallearning.com) and Karen Kay Leonard (253-0403 or kkbleonard@att.net).

Support Networks: The following group meets to provide each other with encouragement, prayer, and a safe place for sharing together.

Building Strong Foundations (Room 004): This ongoing class is geared for parents of children from infants through teenagers. It has a casual setting and lighthearted approach where participants discuss contemporary books and movies that reflect issues affecting young families. Share your milestones and challenges with other young families as we build traditions together. Contact Judy Workman (573-9535 or judy@workmanfamily.com).

Coffee, Tea and Bagels

(Community Room)

Join us for a time of fellowship over pastries, coffee, and juice. Contact Lela Russell at 846-8217 or lruss71338@aol.com

Occasional Educational Opportunities

BWB – Amazing Grace and Friends: An occasional lunch gathering, probably on the second Tuesday of the month, to share a meal at a local restaurant and socialize. This time together will allow participants in the Amazing Grace class and others who'd like to join them to deepen their relationships and continue conversations. Contact Doris Jane Conway (409-6460 or djconway4013@comcast.net).

Leaven Ministries: This group expresses God's love among those who hunger and thirst for creative ways of extending God's embracing love among gay, lesbian, and bisexual people and their parents, families, and friends. Leaven meets several times throughout the year for study, worship, and fellowship. A fall retreat is being planned. Stay tuned for more information.

Leaders: Linda McClain and Becky VanVoorhis (841-1020 or LMcClain@ecommunity.com; rvanvoor@iupui.edu) or Troy Barker and Tim Rankin (578-3705 or troy@comcast.net; trankin@comcast.net).

-

United Methodist Women: The United Methodist Women form a community of women who seek to know God and experience freedom as whole persons through Jesus Christ. They develop a creative, supportive fellowship, and expand concepts of mission through participation in the global ministries of the church.

Leaders: Joyce Laetsch (786-4293 or jmlaetsch@aol.com); Daphne Chen (839-5135 or hsiaohan@yahoo.com); Frances Cain (388-1708 or lbcwv@juno.com);.

Wesley Fellowship: The group meets on the third Sunday of each month at 5:30 p.m. with a pitch-in meal and a variety of programs. Voluntary donation of \$2.00 accepted for the entrée. Most participants are older adults, but anyone is welcome to join us. Hope to see you there!

Leaders: Norma Ritterspach (924-4661 or normaritterspach@aol.com); Emily & Lou Chenette (253-7537 or tocata3@comcast.net)

Weekday Education Opportunities

Childcare available on Wednesday and Thursday evenings



For more information or to sign up for January/February classes, please contact class leaders. Stay tuned for specific sign-up information on Lenten activities.

***Bible Studies:** The psalmist reminds us that God's Word is a lamp unto our feet and a light unto our path. The following study will illuminate deeper understandings of the Bible for our daily lives, helping us to be shaped and transformed into more faithful disciples.*

Wednesday Morning Bible Study: This ongoing group continues to select a book of the Bible and then study it chapter by chapter. Participants seek to understand the Scripture and how it applies to their lives.

Leader: Chuck Johnson (291-4731 or csjoyful@sbcglobal.net)

Meeting: 6:30 a.m. on Wednesdays (all year)

Faith in Action: *What does it mean to live out our faith in the broader world, to be passionate about social justice concerns and share God's love with all people? The following courses provide broad opportunities to expand our knowledge, prayer lives, and commitment to transforming the world into the place God hopes it will become.*

Exploring Social Justice: Leadership will be provided by members of the North family as well as special guest speakers -- with one or more leaders focusing on issues near and dear to their hearts. One or two meetings will be devoted to each issue, addressing a broad spectrum of inequities in our society. While we hope you will participate regularly, no 'guilt trips' for missing meetings.

Coordinator: Jim Ramsey at 727-4040 or (numc.exploresocialjustice@gmail.com)

Meeting: 7 to 9 p.m. on Wednesdays, starting Jan. 7 and continuing through May

Living a Spiritual Life in a Capitalistic Society: Inspired by John Wesley's principles, each class will look at one of the following: Manage All You Can, Earn All You Can, Save All You Can, and Give All You Can. The course will help participants align their spiritual and financial priorities. Some sessions may include a Q&A with financial professionals. This course is designed with young adults in mind. It will happen in conjunction with the sermon series on *Biblical Wisdom for Challenging Economic Times*.

Facilitators: James Hamstra (250-4876 or jhamstra@mac.com) and Joli Heavin (292-5582 or joliheavin@yahoo.com)

Meeting: 7 to 9 p.m. on Tuesdays, from January 6 to 27 at the home of Miki and James Hamstra, 2406 N. Central Ave.

Living the Questions – First Light: This 12-week study of the historical Jesus and the Kingdom of God joins scholars Marcus Borg and John Dominic Crossan on location in Jerusalem and Galilee. Why did Jesus happen when he happened? What were the priorities of Jesus' proclamation of the Kingdom? How did his message threaten the Roman Empire, and how does it continue to indict empire today?

Participants are invited to engage with Biblical scholars on DVD, reading materials, and most importantly, one another. This series allows both long-term church members and newer participants with all theological leanings to discover a meaningful faith in the 21st century.

Leaders: Kyle Craig (416-1984 or kcraig@cts.edu) and Gene Ford (GFord2@clarian.org)

Meeting: 7 to 9 p.m. on Wednesdays, starting Jan. 21 and continuing for 12 weeks

Meditation and Contemplative Prayer: Practice will be scheduled for **Tuesday evenings, 6 to 7 p.m. in the Chapel, beginning Jan. 6.**

Prayer is the action before the action. It assumes an active relationship to God, the Mystery. Meditation/Contemplation provides a practice to develop that personal relationship, being present to yourself in order to listen to your inner voice. Join us for this time of practice as you can.

Facilitators: Linda Smith (257-7896 or carlinsmith@sbcglobal.net); Doris Jane Conway (409-6460 or djconway4013@comcast.net); and Rick Pickering (924-2612 or rpickering@northchurchindy.com)

Meeting: 6 to 7 p.m. on Tuesdays year-round

Race Relations Study Circle: Do you want to deepen your understanding of other people, cultures, and races? This safe environment will give you the opportunity to learn and grow. It will also challenge you to examine your own perceptions on racial relationships and to bridge with others different from you. Diversity is not just a look; it's a communal action as the Body of Christ. Together we'll study *Facing Racism in a Diverse Nation*, a six-session discussion guide to help all kinds of people take part in meaningful dialogue to examine gaps among racial and ethnic groups and create institutional and policy change. *Please sign up with Daphne Chen (839-5135 or hsiahan@yahoo.com) to ensure we have a balanced group.*

Leaders: Rennett Smith (582-0314 or rennettsmith@hotmail.com) and Peter Chen (839-5135 or pjchen@lilly.com)

Meeting: Stay tuned for more information. Most likely 7 to 9 p.m. on Tuesdays (Feb. 24- Mar. 31) or Thursdays (Feb. 26- Apr. 2).

Cost: \$5 dollars for the book. It's free if you create an account at the website. (<http://www.everyday-democracy.org/en/Resource.91.aspx>)

Spanish Class: ¿Habla español? Would you like to be able to greet people in Spanish and do so in culturally appropriate ways? Be able to say more than “please” and “thank you”? We know you took two years in high school and don’t remember a thing! That’s because you haven’t spoken Spanish since high school graduation; now there are plenty of opportunities to share this skill and learn of a new culture right here in Indianapolis! This particular class is geared for those heading on the Nicaragua trip in March, but open to everyone who is interested.

Leaders: Jan Wheeler (765-418-0696 or wheaterjan@alumni.iu.edu)

Meeting: 7 p.m. on Tuesdays, starting Jan. 13 and ending mid-March

The Wednesday View: Members decide on study materials from book studies to themed studies. Materials chosen in the fall of 2008 were “The Shack” and the Fetzer Institute’s program on *The Power of Forgiveness*. Our next meeting, Jan. 14, will be where we look at our spring study choices. During Lent we hope to host a race relations circle. Feel free to participate in any topic of interest.

Leaders: Mary Beth Ingram (924-1885 or mb@ingramindy.com)

Meeting: 9:15 to 11:30 a.m. on Wednesdays from Jan. 14 to May 20

Other Opportunities

The following are covenanted groups that have already formed. But we wanted to increase awareness about the diversity of small groups at North Church.

Camp Fire: A covenanted group that meets monthly for an ongoing book discussion and fellowship. This winter the group will be studying *The Art of Power* by Thich Nhat Hanh. Contact Sue Childers (257-7558 or donsuechilders@yahoo.com).

Wild Geese Women’s Spiritual Development Covenanted

Group: A small group of women using a group spiritual directions model to support one another’s spiritual formation. For more information contact Lisa Schubert (924-2612 or lschubert@northchurchindy.com).

Tuesday Night P.H. Group: This covenanted group will be studying the emerging church, using Tony Jones' book *The New Christians: Dispatches from the Emergent Frontier* as our primary resource. The class runs from 6:45 to 8:30 p.m. on Tuesdays from Jan. 13 to March 10. Contact Ellen Daniels Howell (586-9957 or ellenrdh@sbcglobal.net).

Spiritual Companionship/Direction: For centuries people who have wanted to deepen their walk with God have sought out a companion to help them explore and clarify how God is moving in their lives. There are many trained spiritual directors in the Indianapolis area, including several individuals who are members of North. Lisa Schubert can provide you with general information and help you find a trained Director.

Women's Retreat Group: Linked to The United Methodist Women, this group will meet monthly to encourage, support, and share with one another following the Women's Retreat.

Leader: Marcia Knight (858-5849 or mknight2@indy.rr.com)

Lent 2009: Sneak Peek

This year during Lent we will continue our journey by “Traveling Together.” Drawing on images of traveling and hiking, we’ll see in fresh ways how the season of Lent prepares us for the journey we’re made for.

If you’re eager for a vibrant spiritual life and you’re ready to leave behind some old baggage, you’ll want to be part our sermon series, classes, and events. The following opportunities will be offered. Stay tuned for more information on dates, meeting times, and signing up.

Sunday School – 9:45 a.m.

NEW! Gospel of Mark: This short-term study in March will look into the Gospel of Mark and run parallel to the sermon texts during Lent. It will begin with a dramatic reading and continue through simple explorations of the text. Contact Perry Kea (475-9683 or kea@unindy.edu) and Sarah Nemecek (257-3328 or sarah.nemecek@wellpoint.com).

New Corinthians (Parlor): Join us as we explore the last days of Jesus through Fleming Rutledge’s Book, *The Seven Last Words from the Cross*. Rutledge helps us connect Christ’s journey with our world – from Mel Gibsons’ *The Passion of the Christ* to the war in Iraq. This study will help us to prepare for Good Friday, when the Cathedral Singers will offer Theodore Dubois’ *The Seven Last Words of Christ*. Contact Kevin and Natalie Dempsey, who will lead this conversation (769-3815 or kipbernson@aol.com; natdempsey@aol.com). Cost for the book is \$12, but scholarships are available.

Classes

Basic Trek: Venture into a World of Enough – This 28-day study challenges participants to simplify their lives by being responsible for their actions as they pertain to the environment. Through Scripture and Christian practices, it invites participants to live in a way so that all people will have enough. This study will lead us to our Festival of

God's Creation celebration in April. While this class will be hosted by the young adults, it is open to all who are interested.

Facilitator: Meghan McCormick 752-4067 or
(meghanmccormick@gmail.com)

Meeting: 7 to 9 p.m. on Tuesdays, from March 3 to 24 at the home of Miki and James Hamstra, 2406 N. Central Ave.

Cost: \$11 (scholarships available)

Reels of Reconciliation: We invite you to engage in powerful theological conversations around two different films. *The Visitor* helps us confront the issue of immigration through the eyes of a despondent professor who finds renewed life through some unexpected guests in his New York City apartment. *Tracing the Trade* journeys with descendants of the DeWolf family as they discover enslavement as a cornerstone of Northern commercial life and its concrete implications for our diverse culture. **On Sunday, March 15 at 2:30 p.m.**, Felipe Martinez will lead our film conversation about *The Visitor*. **On Sunday afternoon, March 29**, Brian Williams will guide our discussion on *Tracing the Trade*. Contact Lisa Schubert (924-2612 or lschubert@northchurchindy.com).

Soulful Parenting with Dr. Greg Sipes: This class presents a fresh approach to loving and living with our young people. It goes beyond the daily struggles of life with a teenager to illuminate the underlying spirit that lies at the heart of the family. The "soul" method is not a set of techniques or rules. Techniques address the symptoms, not the root of the issue. True family growth cannot be reduced to a catchy acronym or set of exercises. This program goes beyond the questions of "What do I do if . . ." to address the larger questions. How do we: Find the joy in our parenting that seems to hover tantalizingly just out of reach, beyond the current horizon of argument and strife? *Please RSVP to Anne Moman at 924-2612 (amoman@northchurchindy.com) by Feb. 22.*

Facilitator: Dr. Greg Sipes

(<http://www.mynextvoice.com/parenting/about-greg-sipes/>)

Meeting: 5:30 to 8 p.m. on Sunday, March 1 (parents will eat dinner with youth and then head to Dr. Sipes' workshop).

Traveling Through The Eyes: Lenten Art Workshop: On the sixth day of creation, God created man and woman. God gave us eyes to open and see. What will we see this coming Lent – the Cross, the empty tomb, or the promise of rebirth? **On the afternoon of Sunday, March 8,** you are invited to come to the Visual Arts workshop in the Fellowship Hall as we explore how we “see” during this special season. Stay tuned for more details! Contact Daphne Chen (839-5135 or hsiaohan@yahoo.com) and Laurel Goetzing (283-4232 or lgoetzing@indy.rr.com)

Events

Stay tuned for more information!

Prayer Labyrinth to practice spiritual disciplines of prayer and meditation during our Lenten journey. This event is hosted by the youth but open to all who sign up to participate. For more information, contact Anne Moman at 924-2612 (amoman@northchurchindy.com)

Meeting: Sunday, March 22 in the evening

Family Retreat: A fun-filled family weekend at Camp Tecumseh. Look for sign-up information in February. For more information, contact Joel O’Neil at 926-6623 (joelo@forumcu.com)

Meeting: March 21 and 22

Prayer Hike to experience God in creation at Eagle Creek Park. Contact Mary and Jim McDonald (297-4824 or maryjimc@msn.com).

Meeting: early April

Easter Season Events

Race Relations Workshop with Chris Rice, co-director of Duke Divinity School's Center for Reconciliation and co-author of *Reconciling All Things*. We will be joining Scott UMC to host a powerful conversation. Contact Nicci and Paul George (568-0056 or pngeorge@comcast.net; niccigeorge@comcast.net).

Meeting: Saturday, April 18

Festival of God's Creation will be a weeklong celebration this year, beginning on April 19. **On April 25**, we'll have our annual Creation Shin-Dig with an urban gardening project. Our celebration will culminate on **Sunday, April 26** with the choir offering *Missa Gaia* and the Creation Care Fair Lunch. Contact Eric Galloway (843-9263 or egalloway@signallearning.com)

**North United
Methodist Church**

3808 N. Meridian Street
Indianapolis, IN 46208

Phone (317) 924-2612
Fax (317) 924-5161

www.northchurchindy.com